



A Right choice for  
**YOUR BIG DREAM**

# BLOCK - A

## FLAT 01



## FLAT 02

# BLOCK - B

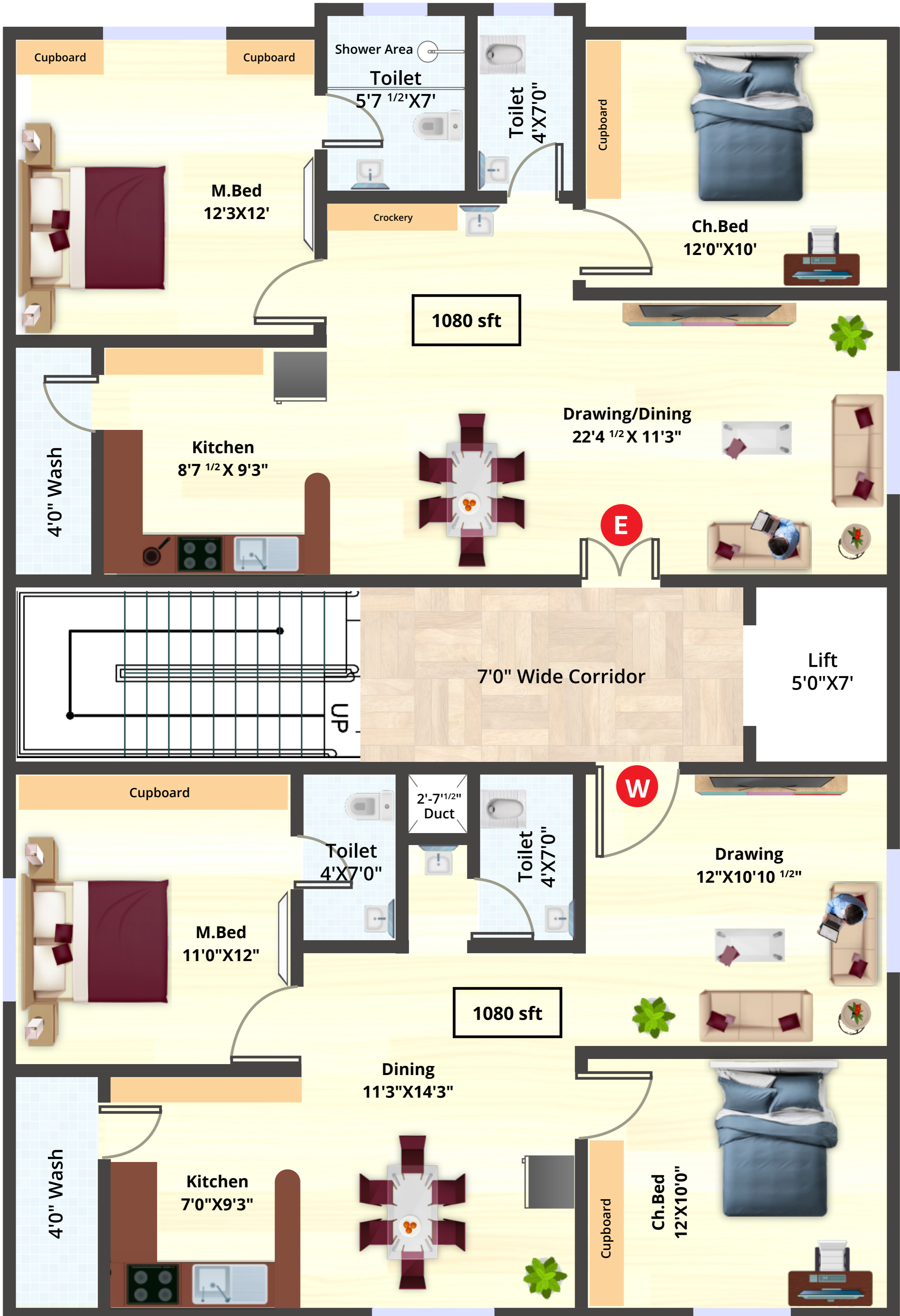
## FLAT 01



## FLAT 02

# BLOCK - C

## FLAT 01



# SPECIFICATIONS

- ▶▶ Structure R.C.C. Framed Structure
- ▶▶ Super Structure High Quality ACC bricks masonry
- ▶▶ Kitchen Granite cooking platform with sink and ceramic tiles up to 2' height
- ▶▶ Door & Windows MAIN DOORS - Veneer Doors, All other Doors – Flush Door Shutters With Designer Laminate & Stainless Steel Hardware of reputed brand. All windows will be UPVC with MS safety Grill
- ▶▶ Plumbing and Sanitary Washbasin WC with flush tank of reputed Brand chrome plated (CP)hot cold wall mixer with shower of reputed brand
- ▶▶ Water Proofing Standard waterproofing of toilets will be done
- ▶▶ Painting Smooth luppom finish for bedrooms, kitchen, living Dining rooms & drawing rooms, internal walls one Coat primer and 2 coats of Emulsion (Asian paints or equivalent). External walls With Combination of texture/ smooth finish
- ▶▶ Electrical Concealed copper wiring of standard make, Power Points for Geysers and exhaust fans in all toilets. Individual MBs miniature circuit breaker (MCB) for Each room, (Provision of inverter). Electrical modular switches of reputed make
- ▶▶ TV/ Internet Tv Points in living room, Provision of Internet points In each flat
- ▶▶ Security Provision of 24/7 security with CCTV camera cabling at premises & parking area
- ▶▶ Lift Each block 6 persons capacity lift will be provided with backup generator
- ▶▶ Generator backup Power backup for all lights & fans in all rooms
- ▶▶ Play Area & Walking Track

## LOCATION MAP



Sowkya Enclave, Near by LV Prasad Eye Institute, Behind Prestige Villas, Kismatpur, Bandlaguda jagir Municipality, RR - 500086

DISTANCE FROM	
MEHDIPATNAM	10.1 KM
FINANCIAL DISTRICT	12.5KM
GACHIBOWLI	14.7KM
SHAMSHABAD AIRPORT	21.0KM

\* This brochure is only conceptual presentation of the project and not a Legal offering. The promoters reserve the right to make changes in plan, Specifications & elevations as deemed fit